

AVRCD: General Information

Our Mission: The Antelope Valley Resource Conservation District assists the communities we serve to manage and enhance their natural resources through education, leadership, and expertise in science-based conservation.

Who we serve: Private land users, farmers, ranchers, public and private entities, and future generations.

Who we are: The Antelope Valley RCD is a special district of the State of California and is dependent upon grants and contracts for its programs, and uses a limited tax increment share from Los Angeles, Kern, and Ventura counties for fixed costs.

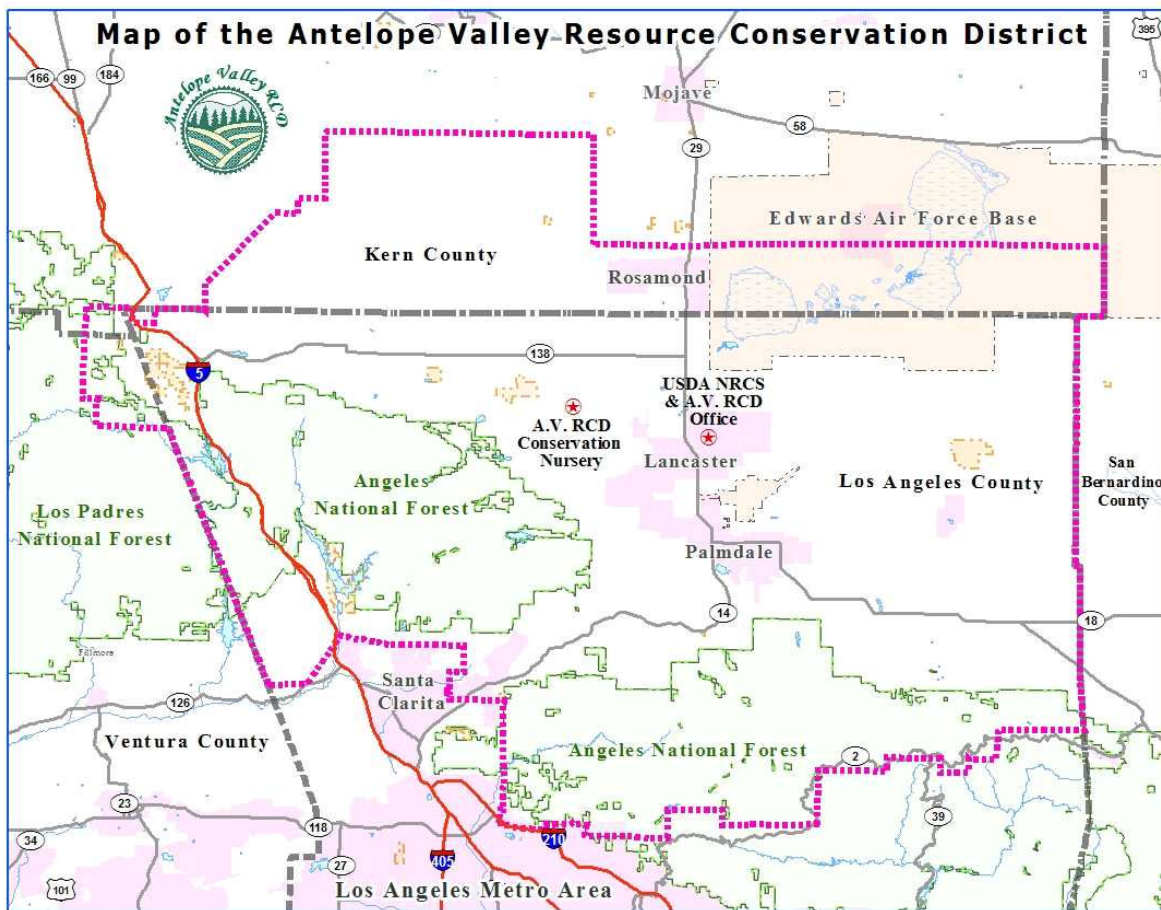
What we do: We find available technical, financial and educational resources, whatever their source, and focus or coordinate them to meet the needs of the local community in conserving soil, water, and related natural resources.

Current Projects: The District owns and operates a Conservation Nursery, which provides desert grown/adapted plants to the public, government agencies, and private organizations. The AVRCD is also involved in Dustbusters, Envirothon, and the Santa Clara Arundo Removal Project.

Future Projects: The AVRCD has four general areas of concern. Here are some current projects related to them.

- Soil and Water Conservation: New Upper Santa Clara Watershed Coordinator position
- Air Quality Improvements: Antelope Valley “Dustbusters” Handbook publication
- Open Space/Agriculture Lands Conservation: Mitigation Management Program
- Desert/Rural Living Education: Non-point Solution Pollution Education

Where we are: The district encompasses approximately 1.65 million acres bounded on the east by the San Bernardino County Line; the north by southeast Kern County; the west by the Ventura County line; and the south by the urban Los Angeles/Santa Clarita area and Angeles Crest Highway.



Board of Directors: The AVRCD is governed by a five-member volunteer Board of Directors, all local landowners and business people appointed by the Los Angeles County Board of Supervisors. The board membership reflects a broad knowledge of conservation and a respect for agriculture, forestry, mining, and other uses of natural resources.

Contact information: (661) 945-2604 Ext. 107, 44811 N. Date Ave., Suite G, Lancaster, CA 93534

Our Slogan: “Reach, Teach, and Serve”